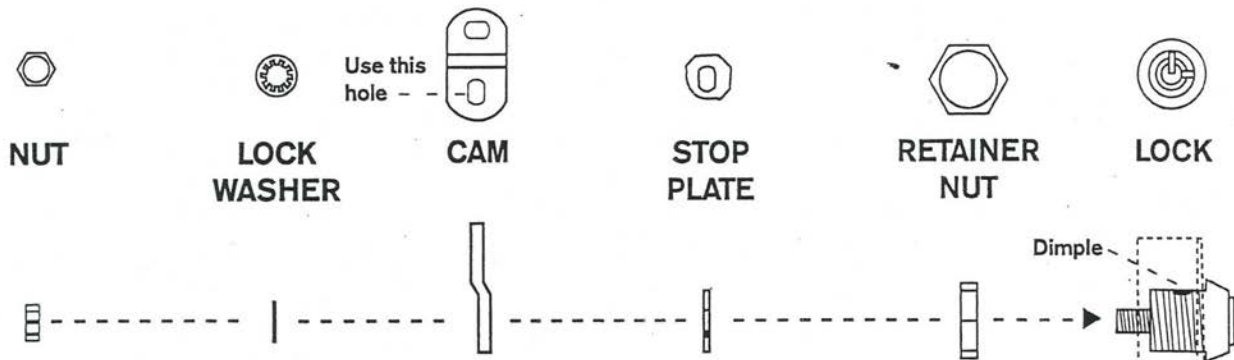


# ASSEMBLY INSTRUCTIONS FOR REPLACEMENT SECURITY LOCK



## MOUNTING REPLACEMENT LOCK TO GUARDIAN DOOR

1. Remove existing LOCK.
2. Insert new LOCK (with dimple pointing upward) into hole where removed lock was located.
3. Screw on RETAINER NUT.
4. Place STOP PLATE with straight edge facing right and rounded cut edge at the bottom (Key should turn clockwise when installed correctly)
5. Place CAM on next through the vertical hole, the horizontal hole should face upward.
6. Insert LOCK WASHER.
7. Lastly attach the small NUT and tighten securely.